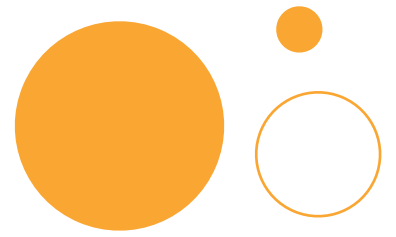




CREATING A POSITIVE FUTURE FOR
ARIZONA'S CHILDREN

ANNUAL REPORT
FISCAL YEAR 2023

DEAR FRIENDS



As we reflect on another remarkable year, we are reminded of the profound impact early childhood has in shaping strong futures.

The first five years of life are critical—a time when the brain and body develop more than in any other phase of life. These first days, months and years have the greatest impact, laying the foundation for a child's lifelong health, learning, and well-being.

For parents, these early years can be both exciting and, at times, overwhelming as they navigate the vital role they play in their child's future.

At Southwest Human Development, we understand how pivotal these early experiences are. That's why we partner with parents and caregivers, providing the support, guidance, and resources needed to help children reach their fullest potential.

This year, Southwest Human Development made a meaningful impact on the lives of more than 140,000 children, families, and professionals across Arizona. Our 40+ high-quality programs span five key areas: Child Development and Mental Health, Easterseals Disabilities Services, Early Literacy and Head Start, Family Support, and Professional Development for Early Childhood Professionals.

By focusing on these critical areas, we equip families with the tools and support they need to create nurturing environments where children can thrive.

We are incredibly proud of what we've accomplished together, but none of it would be possible without the generous support of our donors, community partners, and dedicated staff. Your belief in our mission enables us to continue building a brighter future for Arizona's children and families.

Thank you for being a vital part of this journey. Together, we are creating a future where every child can thrive.



Ginger Ward
Ginger Ward
CEO



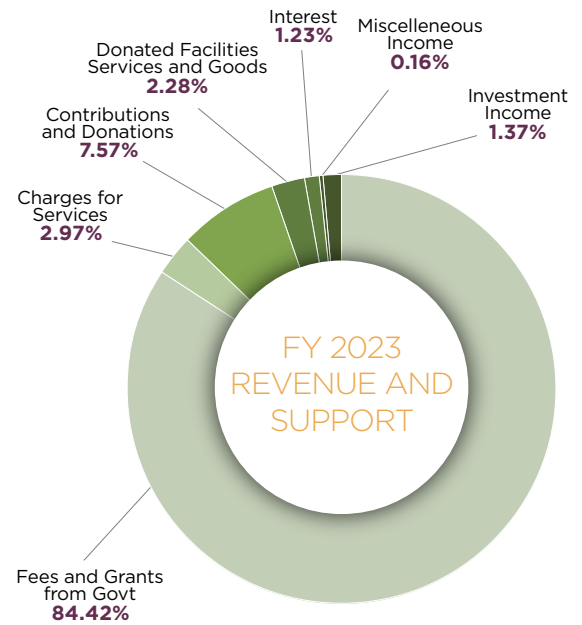
Julie Shaw
Julie Shaw
Board Chair

FY 2023 FINANCIALS

REVENUE AND SUPPORT

Fees and grants from Govt	\$63,221,930
Charges for services	\$2,222,856
Contributions and donations	\$5,671,209
Donated Facilities, Services and Goods	\$1,703,847
Interest	\$919,915
Miscellaneous Income	\$119,655
Investment Income	\$1,026,615

\$74,886,027
Total Revenue and Support



EXPENSES

Program Services

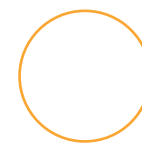
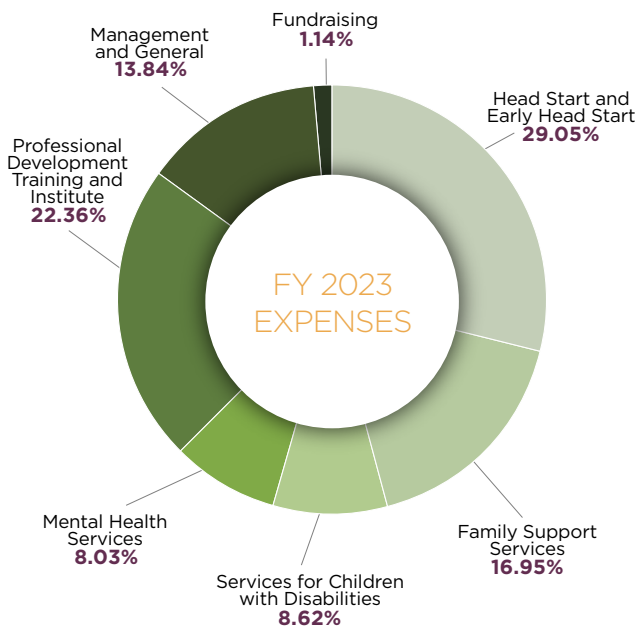
Head Start and Early Head Start	\$19,636,358
Family Support Services	\$11,455,350
Services for Children with Disabilities	\$5,823,971
Mental Health Services	\$5,426,308
Professional Development and Training Institute	\$15,114,334

\$57,456,321

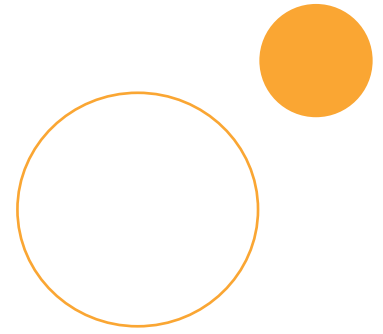
Support Services

Management and General	\$9,356,881
Fundraising	\$772,526

\$67,585,728
Total Expenses



CORPORATE & FOUNDATION SUPPORTERS



Arizona Governor's Office for Youth, Faith and Family
Alaska USA Foundation
Alliance Bank of Arizona
American Family Insurance
Arizona Buuck Family Fund
Arizona Community Foundation
Arizona Republic/Season for Sharing Campaign
AstraZeneca
Benevity Community Impact Fund
Board of Visitors
Blue Cross Blue Shield of Arizona
Boeing Arizona Employees Community Fund
BOK Foundation
Cardinals Charities
CENTURY 21 Arizona Foothills
Children In Need Foundation
CopperPoint Insurance Companies
Delta Dental of Arizona Charitable Foundation
Desert Financial Credit Union
Easterseals
Fifth Generation Inc
Foundation Source
Gila River Indian Community
In-N-Out Burger Foundation
Kemper & Ethel Marley Foundation
LISC
Lockton Companies
Magellan Rx Management
Mercy Care
Mountain America Credit Union
NARBHA Institute
Performance Contracting
PNC Foundation
Pulliam Foundation
QuikTrip Corporation
Salt River Project
Simone Charitable Foundation, Inc.
Start Early
Steve Nash Foundation
Sunflower Bank
Surplus Line Association of Arizona Foundation
TDIndustries
Thunderbirds Charities
Valley of the Sun United Way
Valley Toyota Dealers Association
Virginia G. Piper Charitable Trust
Wells Fargo Foundation

ABOUT US

MISSION

Southwest Human Development strengthens the foundation Arizona's children need for a great start in life.

VISION

A positive future for every child.

CORE VALUES

Our core values embody Southwest Human Development's commitment to services that uplift the lives of children, families and other care providers, and the communities in which they live. These values are intended to guide the professional development, ethical conduct and skilled practice of all of our staff, whatever their specific role within the agency. All staff are valued as making essential contributions to strengthening the foundation that Arizona's children need for a great start in life.

- High Quality and Ethical Services
- Learning as a Lifelong Process
- Promoting Social Justice, Equity and Inclusiveness
- Working in Partnership with Families, Caregivers and Community Providers
- Reflective Practice in Support of Relationship-Based Work
- Innovative Responsiveness to Community Needs
- Responsible Stewardship

OUR WORK

The first five years of life are the most critical in a child's development. At Southwest Human Development, our services improve lives and help families by supporting young children and their caregivers during this important time. In partnership with families, we provide children with the care, attention and support needed to set them on a path to success in school and life, and help them reach their fullest capabilities.

We are Arizona's largest nonprofit organization dedicated to early childhood development and our 900 staff members provide 40 innovative programs and services to 135,000 children and their families each year in the areas of:

- Child Development
- Mental Health
- Easterseals Disabilities Services
- Early Literacy
- Head Start and Early Head Start
- Family Support and Child Welfare
- Professional Development and Training



Maricopa County

- Early Head Start and Head Start
- Healthy Families
- Foster Care and Adoption
- Direct Support Services
- Family Connections
- Nurturing Parenting Program
- Parent Partners Plus
- Home Assessments and Courtesy Supervision
- Inclusion Program
- High Risk Perinatal Program
- Nurse-Family Partnership
- Side By Side
- Creating Connections
- Professional Development Institute at Educare Arizona
- Raising a Reader
- Reach Out and Read

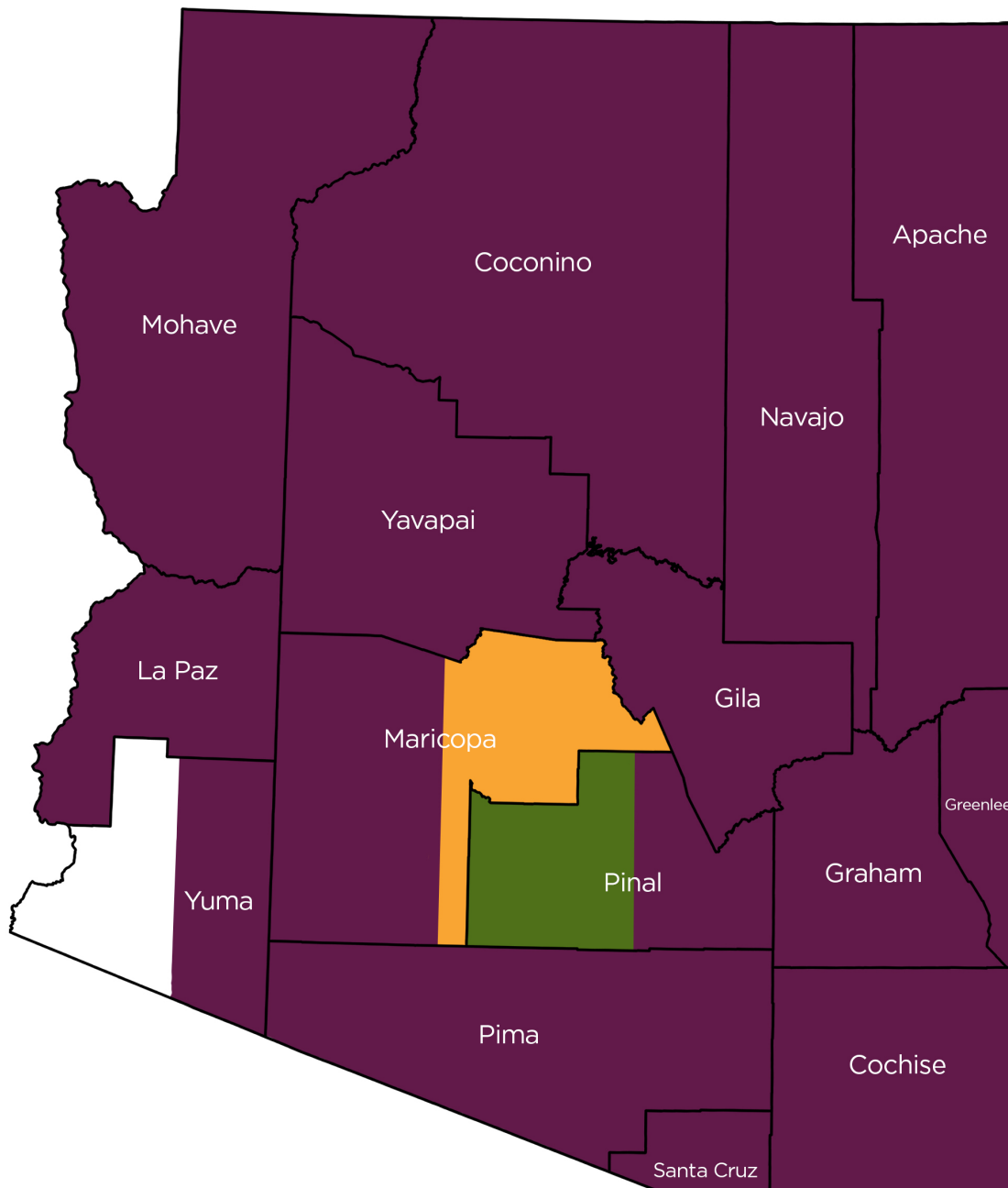
Pinal County

- Home Assessments and Courtesy Supervision



Statewide

- Birth to Five Helpline
- Smart Support
- Early Childhood Business Solutions
- Birth to Five Center of Excellence
- Trauma-Informed Care Trainings
- Construct Coaching
- Smooth Way Home
- Harris Infant and Early Childhood Mental Health Training Institute
- AZ Steps Training for Professionals
- Journey Through Books
- Quality First Academy
- Quality First Assessment
- Quality First Coaching
- Let's Talk Dads



YOU CAN HELP

The investments we make today in young children advance the health, well-being and development of our community. More and more evidence suggests that there are aspects of early childhood behavior and mental health that, if nurtured, can improve children's life chances. We're asking you to show your support for our kids by donating to our work to improve children's lives. You can do so in a few easy ways:

Make a tax-deductible contribution through our website at swhd.org/give.

Take advantage of the Arizona Charitable Tax Credit and receive a dollar-for-dollar deduction on your state income taxes. It's easy — just visit swhd.org/taxcredit to learn how to donate.

Volunteer your time helping children and families throughout the community. We have some great ways to get involved on our website at swhd.org/volunteer.

Thank you for your support of Arizona children and their families. With your help, we can ensure a brighter future for our community.

FOR QUESTIONS, PLEASE CONTACT US AT (602) 808-GIVE (4483) OR GIVE@SWHD.ORG



2850 N. 24TH STREET
PHOENIX, AZ 85008
(602) 266-5976
SWHD.ORG

